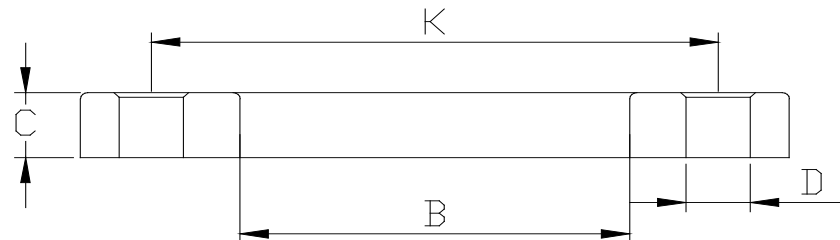
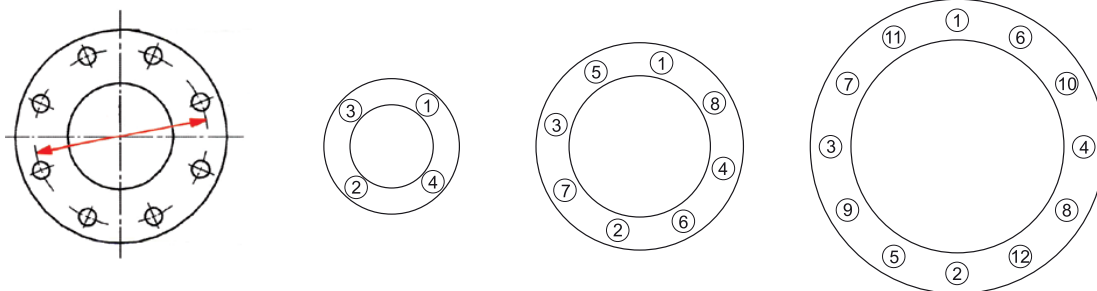


**BRIDE PVC PRESSION -  
 MONTAGE SUR COLLET PVC PRESSION**


Bride pvc pression					
Poids (g)	$\phi$	B	K	C	D
248	50	62	110	17	4x18
311	63	78	125	18	4x18
406	75	92	145	19	4x18
494	90	110	160	20	8x18
614	110	133	180	21	8x18
648	125	149	190	23	8x18
947	140x125	149	210	23	8x18
791	140	167	210	26	8x18
1073	160	190	240	28	8x22
1204	200	227	270	30	8x22
1684	200-PN10	235	295	34	8x22
1205	225	249	295	34	8x22
2790	250	285	350-356	34	12x22
3154	315	350	400-425	34	12x22
4278	400	439	515	50	16x25


**ORDRE DE  
 SERRAGE**


ENTRAXE BOULON K = ENTRAXE